



The Residence 6

MODEL ADDRESS
5227 Caneva Court
Antioch, CA 94531

Dayna Floyd | (925) 255-1808
dfloyd@denovahomes.com



STARTING AT
\$889,900

2,240 Sq. Ft.
2 Story
4 Bed
3 Bath
2 Car Garage

Captivating two-story home with 2,240 Sq. Ft. (approx.) of living space, 4 bedrooms, Loft, 3 baths, and a 2-car garage! The first floor features a bedroom and full bath off of the entrance, perfect for a guest or older relative. The expansive Great Room has plenty of room to entertain friends and family, a large Family Dining area, and a gourmet Kitchen with granite countertops, 6" backsplash, and full-height at cooktop in 3 color choices, kitchen island overlooking the Family Dining and Great Room, stainless steel single basin kitchen sink, Beech cabinets with recessed panels in 2 stain choices, LG stainless steel kitchen appliances including 5-burner smart wi-fi enabled 30" self-cleaning gas range with a microhood and dishwasher.

The second floor includes a Loft, a centrally located Laundry Room with pre-plumbing for a washer and dryer, spacious secondary bedrooms, a large Owner's Suite with a walk-in closet, and an adjoining private bath with dual vanities with E-Stone countertops, 4" splash and undermount rectangular sinks, polished chrome hardware and bath accessories, designer-selected overhead chrome lighting, spacious fiberglass shower with glass and chrome enclosure and square-cut vanity mirrors. This home also comes with hand-laid 18" x 18" ceramic tile flooring at Entry, Kitchen, Dining Room, and Owner's Bathroom, hand-laid 12" x 12" ceramic tile flooring in all secondary baths and Laundry, designer selected carpet in all other rooms including stairs, smart thermostat, tankless water heater, a video doorbell, and much more! Please see the Sales Agent for complete details.



Craftsman



Farmhouse



Tuscan

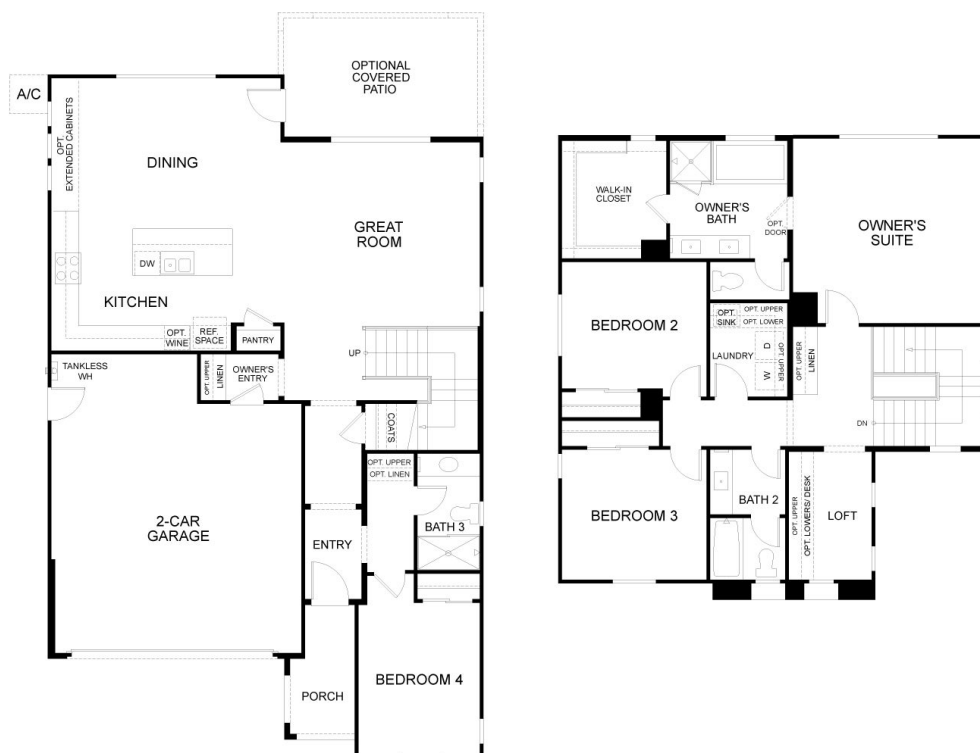
All renderings are artist impressions. Actual porch and window configuration varies and is subject to change. DeNova Homes reserves the right to make changes to price, material, and specifications without notice and without liability for such changes. Broker cooperation welcome. Sales & marketing by DeNova Homes Sales, DRE #01247582 Equal Housing Opportunity.



The Residence 6

MODEL ADDRESS
5227 Caneva Court
Antioch, CA 94531

Dayna Floyd | (925) 255-1808
dfloyd@denovahomes.com



Floor Plan