



SOLD

\$866,500

THE RESIDENCE 4

2,179 Sq. Ft.

2 Story

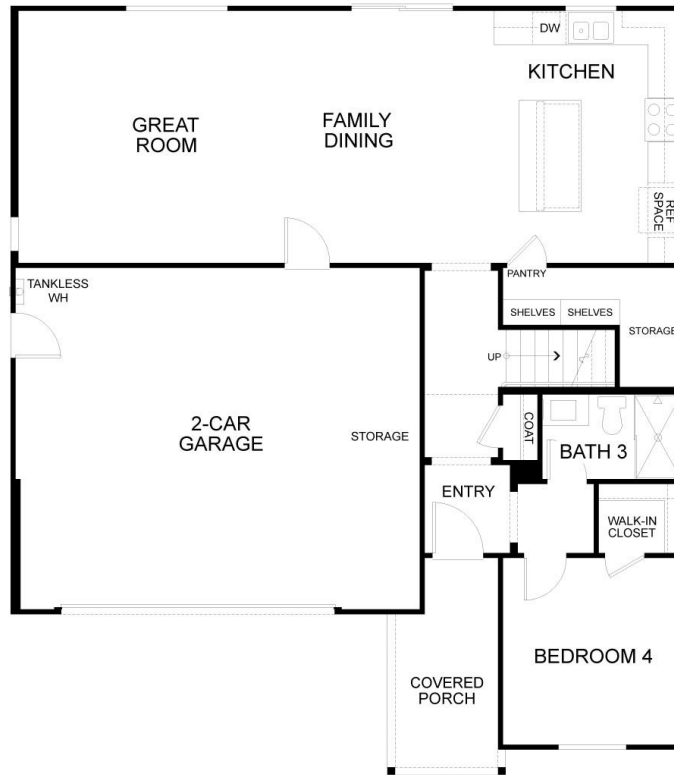
4 Bed

3 Bath

2 Car Garage

Purchasing a model home offers a blend of luxury, convenience, and investment potential that appeals to homebuyers seeking a refined living experience. With its designer upgrades, fully landscaped backyard, a model home embodies a lifestyle that is both aspirational and attainable. Whether you're looking for instant elegance, cost efficiency, or enhanced resale value, unlocking the benefits of a model home may just be the key to finding your perfect abode.

Come home to relaxation and peace of mind with a brand-new home, featuring Mount Diablo Views. This model home was professionally designed and includes over \$113,000 in upgrades and finishes. Some of the upgrades include gray shaker cabinets with soft close drawers and doors, quartz counter tops with a full tile backsplash, all tile flooring on the first floor, beautifully upgraded stair railing, upgraded lighting and ceiling fans throughout, high-end nickel finish hardware, large walk-in pantry, upgraded 3-tone paint and tall 5" baseboards. The first floor features a bedroom and full bath off of the entrance, perfect for a guest or older relative. The second floor includes a Loft, a centrally located Laundry Room with pre-plumbing for a washer and dryer, spacious secondary bedrooms, a large Owner's Suite with a walk-in closet, and an adjoining private bath with dual vanities with E-Stone countertops, 4" splash and undermount rectangular sinks, polished chrome hardware and bath accessories, designer-selected overhead chrome lighting, spacious fiberglass shower with glass and chrome enclosure and square-cut vanity mirrors. There is low maintenance landscaping on a corner lot with a beautifully landscaped and spacious backyard with built in BBQ and pergola. All LG appliances, including refrigerator and washer/dryer are included. With features such as a tankless water heater and video doorbell this home was designed for efficiency and modern living.



First Floor



Second Floor