



2,731 Sq. Ft.
2 Story
4 Bed
3.5 Bath
2 Car Garage

Expansive two-story home with 2,731 Sq. Ft. (approx.) of living space, 4-5 bedrooms, a Den, 3.5 baths, and a 2-car garage! The first floor features a den and powder bath off of the entrance, perfect for a home office. The expansive Great Room has plenty of room to entertain friends and family, a large Family Dining area, and a gourmet Kitchen with granite countertops, 6" backsplash, and full-height at cooktop in 3 color choices, stainless steel single basin kitchen sink, Beech cabinets with recessed panels in 2 stain choices, LG stainless steel kitchen appliances including 5-burner smart wi-fi enabled 30" self-cleaning gas range with a microhood and dishwasher. Tucked in the back of the house, is a bedroom with an ensuite bathroom, perfect for a guest or older family member and a laundry room with pre-plumbing for a washer and dryer.

The second floor includes a loft,

spacious secondary bedrooms, a large Owner's Suite with an expansive walk-in closet, and an adjoining private bath with dual vanities with E-Stone countertops, 4" splash and undermount rectangular sinks, polished chrome hardware and bath accessories, designer-selected overhead chrome lighting, spacious fiberglass shower with glass and chrome enclosure and square-cut vanity mirrors. This home also comes with hand-laid 18" x 18" ceramic tile flooring at Entry, Kitchen, Dining Room, and Owner's Bathroom, hand-laid 12" x 12" ceramic tile flooring in all secondary baths and Laundry, designer selected carpet in all other rooms including stairs, smart thermostat, tankless water heater, a video doorbell, and much more! Please see the Sales Agent for complete details.



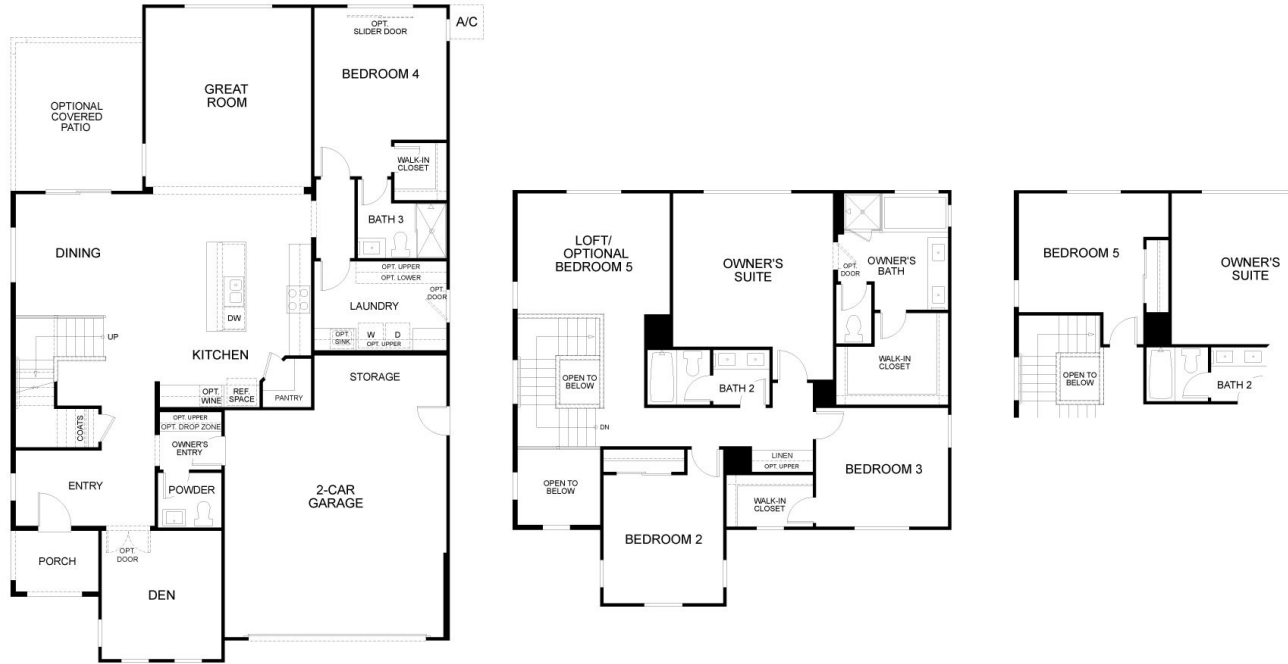
Craftsman



Farmhouse



Tuscan



Floor Plan