

**STARTING AT**  
**\$813,500**

1,266 Sq. Ft.

3 Story

2 Bed

2.5 Bath

2 Car Garage

Plan 1 is a carefully crafted two-bedroom home that offers approximately 1,266 square feet of modern living space. The main level boasts an open-concept layout where the kitchen flows to the great room and dining area, creating the perfect space for entertaining or relaxing at home. Expansive windows allow natural light to pour in, while two private decks extend the living space outdoors, offering ideal spots for morning coffee or evening unwinding.

Upstairs, both bedrooms serve as private retreats, each featuring an en-suite bath for ultimate convenience. The primary suite is a haven of relaxation with a spacious layout, a walk-in closet, and a shower with a built-in seat. With a two-car garage and a layout that maximizes every square foot, Plan 1 is the perfect blend of functionality and comfort. **Please see agent for more information.**

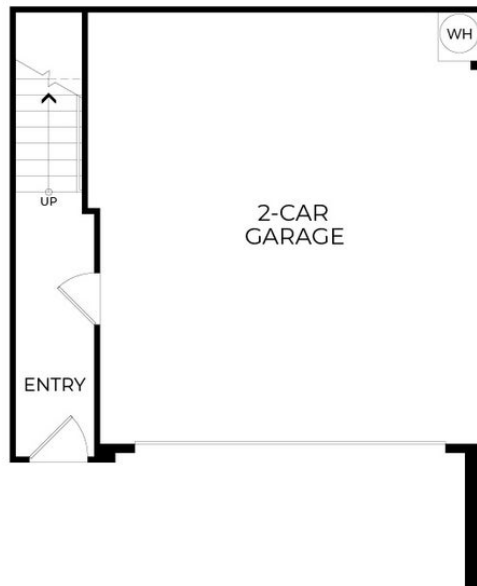


# The Residence 1

MODEL ADDRESS  
2804 Triad Place  
Livermore, CA 94551

Dayna Floyd | 925-255-1808  
[dfloyd@denovahomes.com](mailto:dfloyd@denovahomes.com)

**PRELIMINARY**

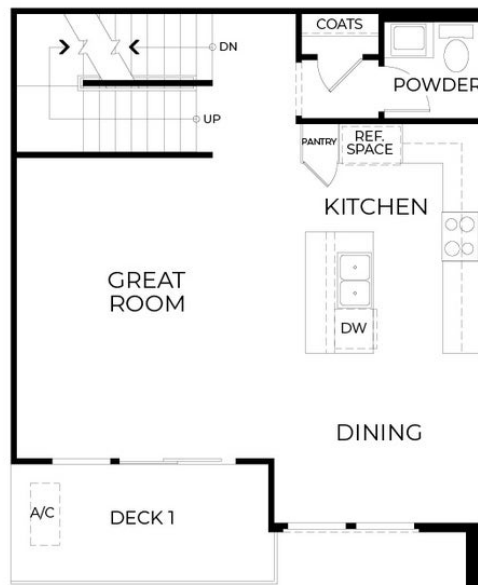


FIRST FLOOR

DENOVA HOMES  
CAVA  
PLAN BB1



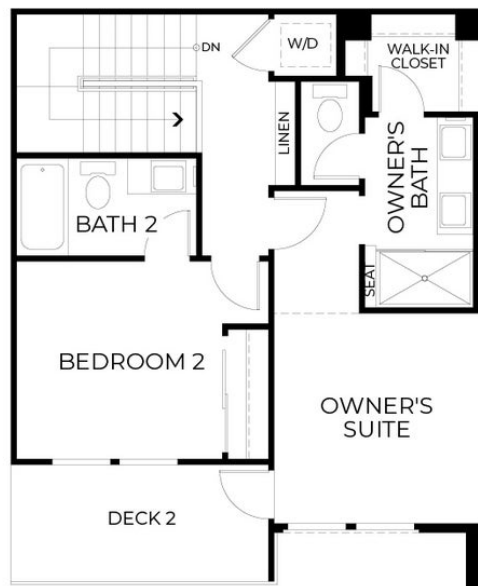
**PRELIMINARY**



## SECOND FLOOR

DENOVA HOMES  
CAVA  
PLAN BB1

**PRELIMINARY**



## THIRD FLOOR

DENOVA HOMES  
CAVA  
PLAN BB1