



The Residence 2

MODEL ADDRESS
2804 Triad Place
Livermore, CA 94551

Dayna Floyd | 925-255-1808
dfloyd@denovahomes.com



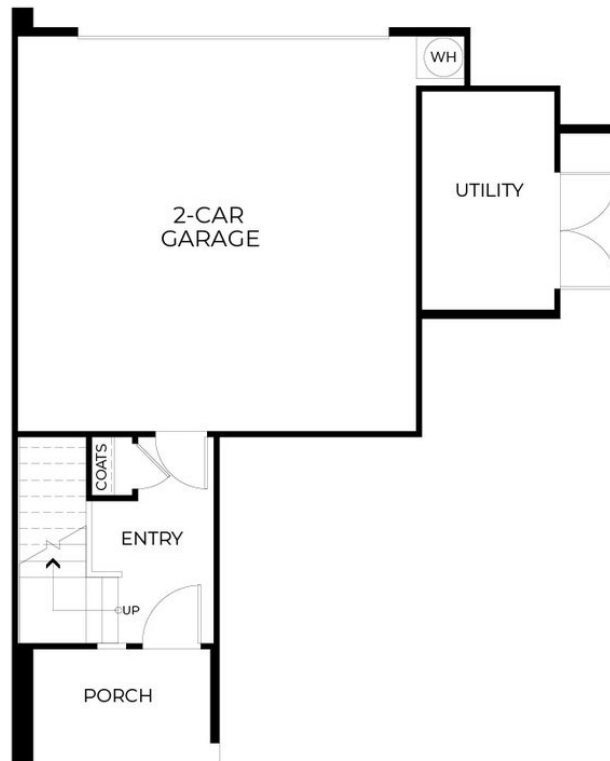
1,286 Sq. Ft.
3 Story
2 Bed
2.5 Bath
2 Car Garage



All renderings are artist's conception. Actual porch and window configuration varies from artists renderings. DeNova Homes reserves the right to make changes in price, material, and specifications without notice and without liability for such changes. Broker cooperation welcome. Sales & marketing by DeNova Homes Sales, DRE #01247582 Equal Housing Opportunity.



PRELIMINARY



FIRST FLOOR

DENOVA HOMES
CAVA
PLAN URT2

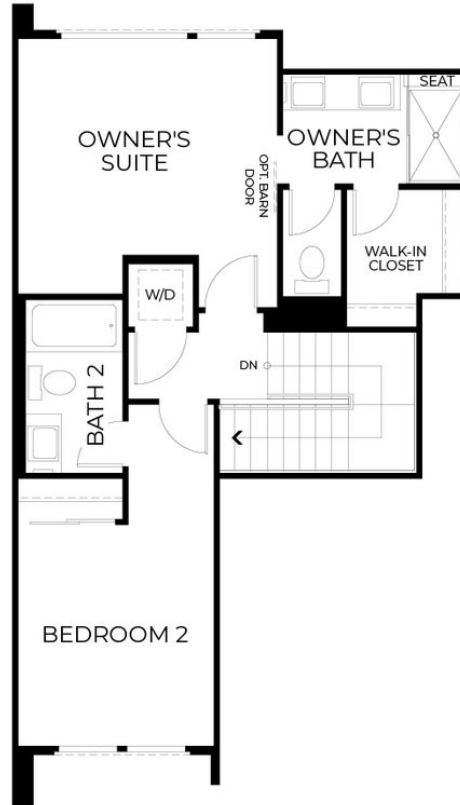
PRELIMINARY



SECOND FLOOR

DENOVA HOMES
CAVA
PLAN URT2

PRELIMINARY



THIRD FLOOR

DENOVA HOMES
CAVA
PLAN URT2