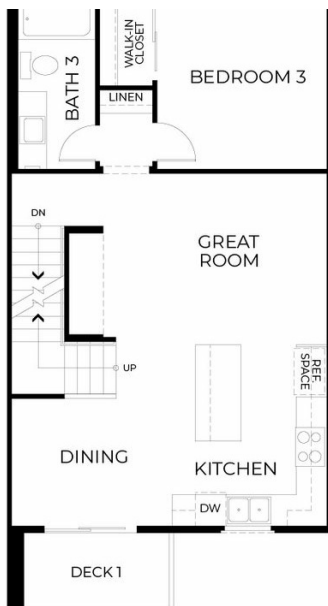




The Residence 4

MODEL ADDRESS
2804 Triad Place
Livermore, CA 94551

Dayna Floyd | 925-255-1808
dfloyd@denovahomes.com



STARTING AT
\$938,665

1,608 Sq. Ft.

3 Story

3 Bed

3 Bath

2 Car Garage

With approximately 1,608 square feet of living space, Plan 4 offers flexibility and comfort for a variety of lifestyles. A private porch entry leads to a welcoming foyer, where a first-floor work center or optional powder bath adds convenience. The second floor showcases an open-concept kitchen, dining, and great room, ideal for entertaining. Two decks offer additional outdoor spaces, enhancing the home's livability.

The primary suite is a true retreat, featuring a spacious walk-in closet, a beautifully appointed en-suite bath with a seated shower and its own private deck. Two additional bedrooms provide plenty of space for family, guests, or a home office, while a two-car garage ensures storage and parking needs are met. **Please see agent for more information.**



PRELIMINARY



FIRST FLOOR

DENOVA HOMES
CAVA
PLAN URT4

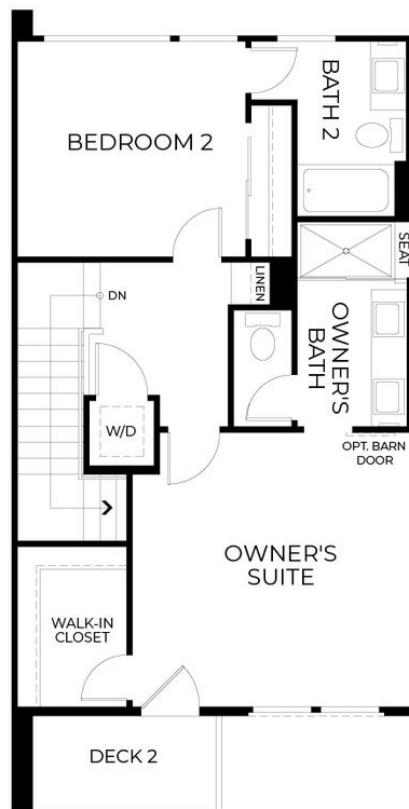
PRELIMINARY



SECOND FLOOR

DENOVA HOMES
CAVA
PLAN URT4

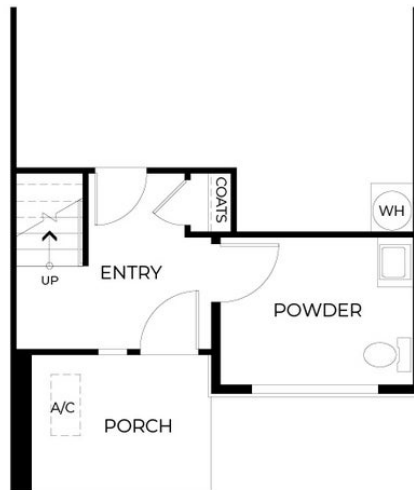
PRELIMINARY



THIRD FLOOR

DENOVA HOMES
CAVA
PLAN URT4

PRELIMINARY



OPTIONAL
ADP POWDER

OPTIONS

DENOVA HOMES
CAVA
PLAN URT4