

**STARTING AT**  
**\$676,900**

1,932 Sq. Ft.

2 Story

4 Bed

3 Bath

2 Car Garage



Cattle Ridge Residence 1 redefines modern living with 1,932 square feet of stylish, functional space. This 4-bedroom, 3-bathroom home welcomes you with a spacious layout that connects the kitchen, dining, and living areas, creating the perfect backdrop for both intimate gatherings and lively celebrations. A versatile main floor bedroom and full bathroom add a touch of convenience ideal for guests or a home office.

Upstairs, the primary suite awaits, offering a tranquil retreat with a spacious walk-in closet and a luxurious ensuite bath. Two additional bedrooms share a thoughtfully designed bathroom, completing the upper level. For those who cherish outdoor living, an optional covered patio transforms the backyard into an alfresco paradise, perfect for morning coffees or sunset dinners. The 2-car garage ensures plenty of storage space while complementing the home's seamless design in the vibrant and ever-growing community of Summer Lake North.

**Please consult with sales agent for complete details.**



All renderings are artist's conception. Actual porch and window configuration varies from artists renderings. DeNova Homes reserves the right to make changes in price, material and specifications without notice and without liability for such changes. Broker cooperation welcome. Sales & marketing by DeNova Homes Sales, DRE #01247582 Equal Housing Opportunity.

**Residence 1A | Spanish**



**Residence 1B | Tuscan**



**Residence 1E |  
Farmhouse**



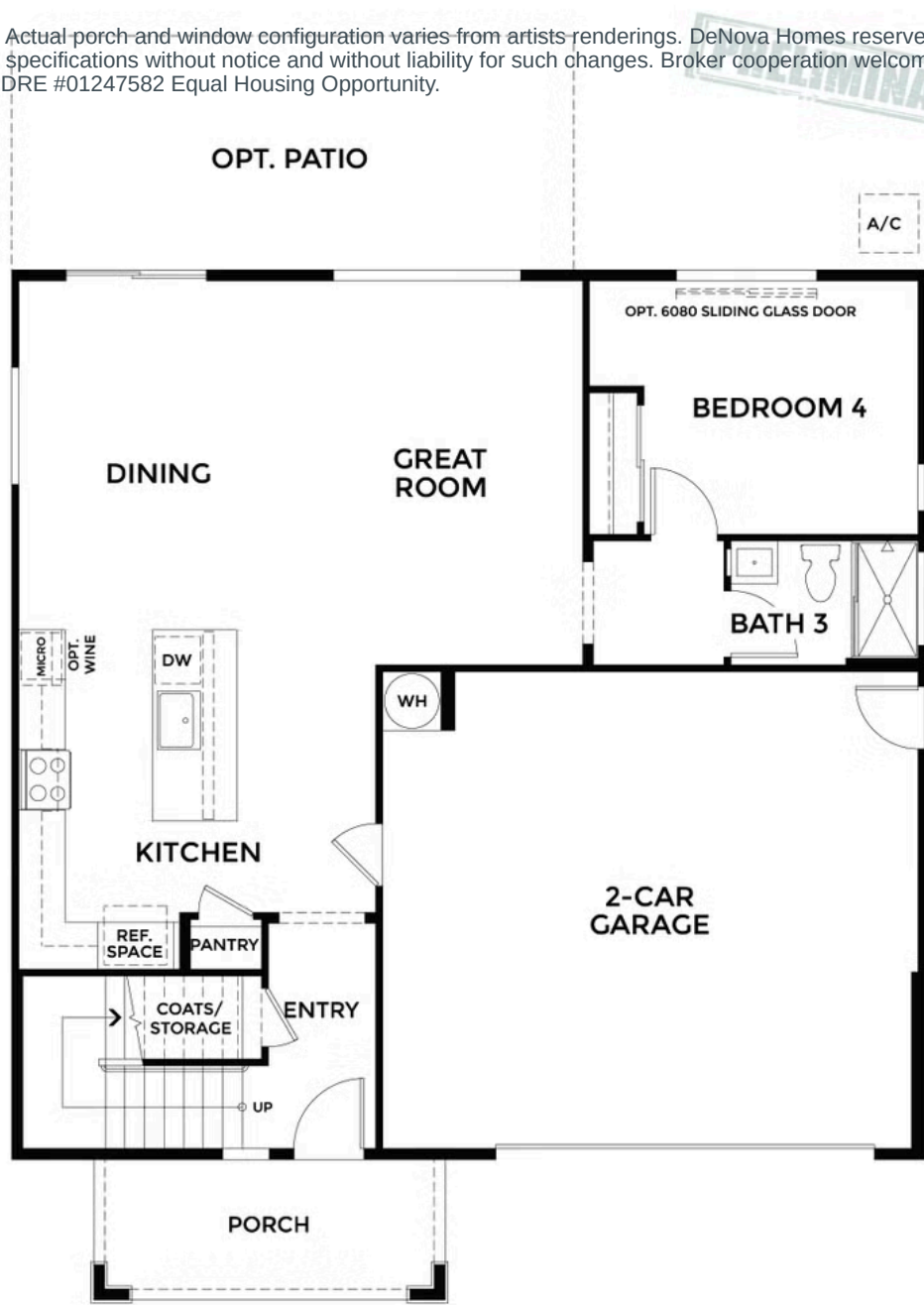


# The Residence 1

MODEL ADDRESS  
420 Eagle Circle  
Oakley, CA 94561

Dayna Floyd | 925-255-1808  
[dfloyd@denovahomes.com](mailto:dfloyd@denovahomes.com)

All renderings are artist's conception. Actual porch and window configuration varies from artists renderings. DeNova Homes reserves the right to make changes in price, material, and specifications without notice and without liability for such changes. Broker cooperation welcome. Sales & marketing by DeNova Homes Sales, DRE #01247582 Equal Housing Opportunity.



FIRST FLOOR

DENOVA HOMES  
SUMMERLAKE VILLAGE 1  
PLAN 1 SPANISH



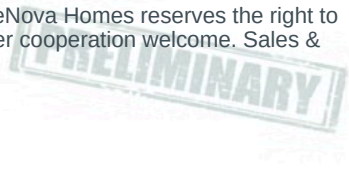


# The Residence 1

MODEL ADDRESS  
420 Eagle Circle  
Oakley, CA 94561

Dayna Floyd | 925-255-1808  
[dfloyd@denovahomes.com](mailto:dfloyd@denovahomes.com)

All renderings are artist's conception. Actual porch and window configuration varies from artists renderings. DeNova Homes reserves the right to make changes in price, material, and specifications without notice and without liability for such changes. Broker cooperation welcome. Sales & marketing by DeNova Homes Sales, DRE #01247582 Equal Housing Opportunity.



SECOND FLOOR



# The Residence 1

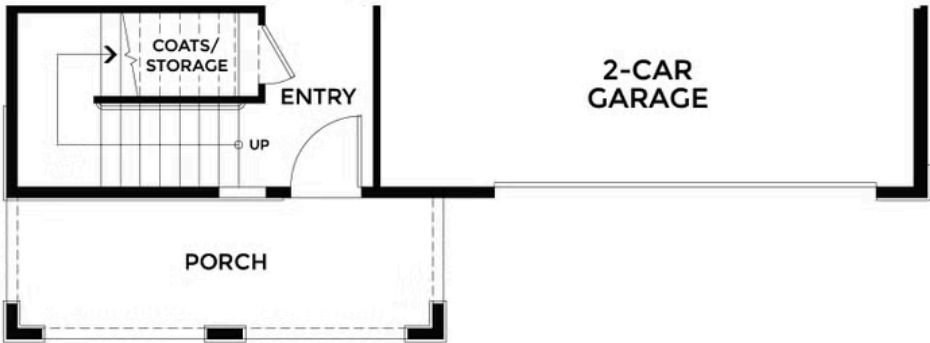
MODEL ADDRESS  
420 Eagle Circle  
Oakley, CA 94561

Dayna Floyd | 925-255-1808  
[dfloyd@denovahomes.com](mailto:dfloyd@denovahomes.com)

All renderings are artist's conception. Actual porch and window configuration varies from artists renderings. DeNova Homes reserves the right to make changes in price, material, and specifications without notice and without liability for such changes. Broker cooperation welcome. Sales & marketing by DeNova Homes Sales, DRE #01247582 Equal Housing Opportunity.



ELEVATION TUSCAN  
SECOND FLOOR



ELEVATION TUSCAN  
FIRST FLOOR

ELEVATIONS



# The Residence 1

MODEL ADDRESS  
420 Eagle Circle  
Oakley, CA 94561

Dayna Floyd | 925-255-1808  
[dfloyd@denovahomes.com](mailto:dfloyd@denovahomes.com)



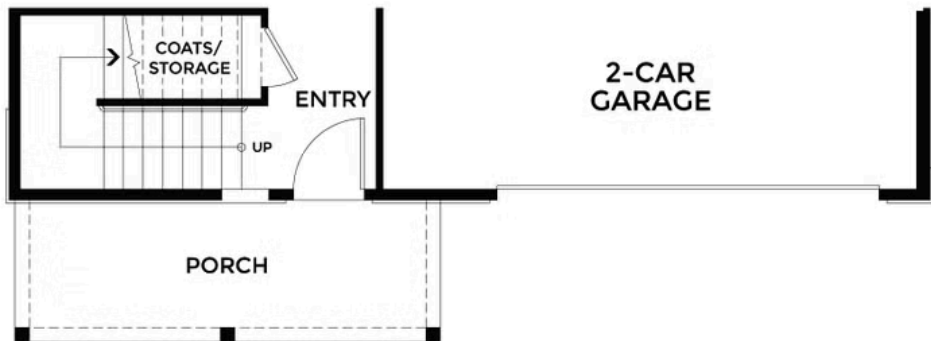
**PRELIMINARY**



All renderings are artist's conception. Actual porch and window configuration varies from artists renderings. DeNova Homes reserves the right to make changes in price, material, and specifications without notice and without liability for such changes. Broker cooperation welcome. Sales & marketing by DeNova Homes Sales, DRE #01247582 Equal Housing Opportunity.



**ELEVATION FARMHOUSE  
SECOND FLOOR**



**ELEVATION FARMHOUSE  
FIRST FLOOR**

**ELEVATIONS**

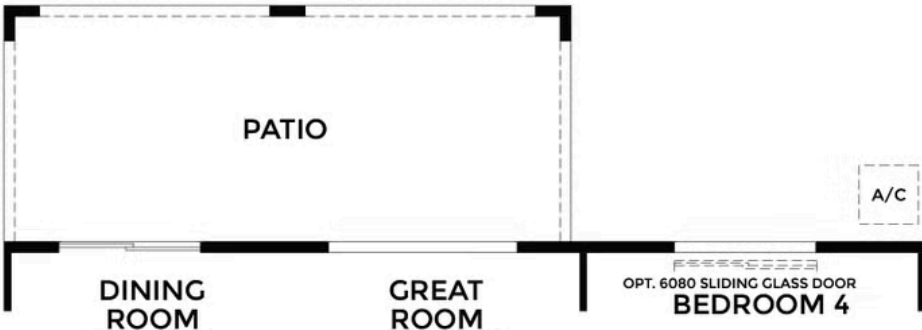
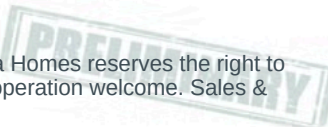


# The Residence 1

MODEL ADDRESS  
420 Eagle Circle  
Oakley, CA 94561

Dayna Floyd | 925-255-1808  
[dfloyd@denovahomes.com](mailto:dfloyd@denovahomes.com)

All renderings are artist's conception. Actual porch and window configuration varies from artists renderings. DeNova Homes reserves the right to make changes in price, material, and specifications without notice and without liability for such changes. Broker cooperation welcome. Sales & marketing by DeNova Homes Sales, DRE #01247582 Equal Housing Opportunity.



OPTIONAL  
PATIO

OPTIONS

DENOVA HOMES  
SUMMERLAKE VILLAGE 1  
PLAN 1 SPANISH

