



UNDER CONSTRUCTION

\$429,900

**THE RESIDENCE 7
(DUET)**

Craftsman Bungalow

1,606 Sq. Ft.

2 Story

2 Bed

2.5 Bath

2 Car Garage

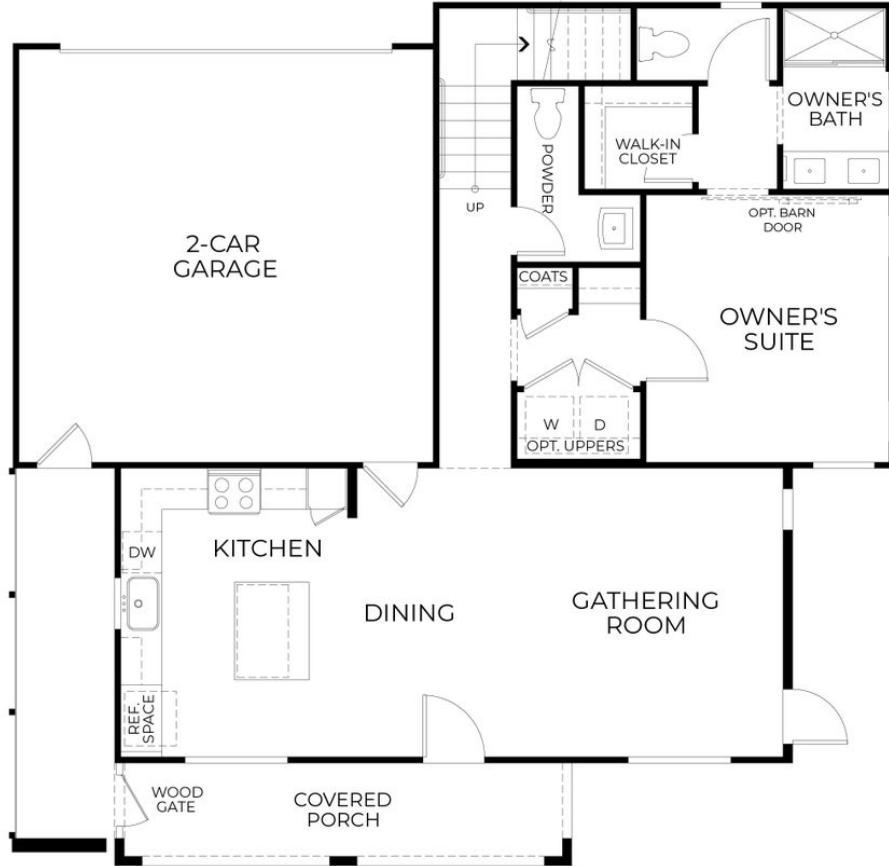
Discover this beautifully upgraded 1,569 square foot bungalow-style home, offering 2 spacious bedrooms and 2 bathrooms. Designed with comfort and sophistication in mind, the home features upscale finishes and functional spaces tailored for everyday living.

At the heart of the home, the gourmet kitchen showcases elegant quartz countertops, a full tile backsplash, and a premium LG appliance package—perfect for both daily meals and special occasions. The adjacent dining and gathering areas are finished with rich laminate wood flooring, creating a warm, seamless space for relaxing or entertaining.

An additional office area with large windows fills the space with natural light and offers direct access to the covered patio—ideal for morning coffee, evening unwinding, or year-round enjoyment.

Do not miss your chance to own this thoughtfully designed home with top-quality upgrades and generous living areas.

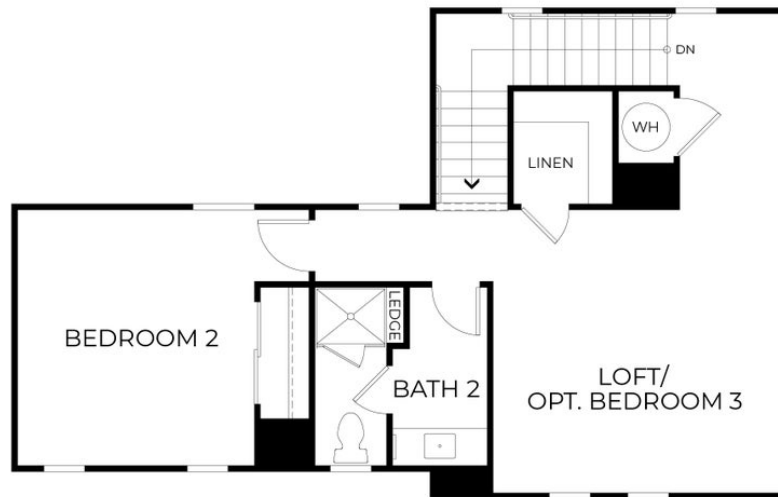
Interior photos shown are of the model home. Please contact the sales office for details.



FIRST FLOOR

Preliminary

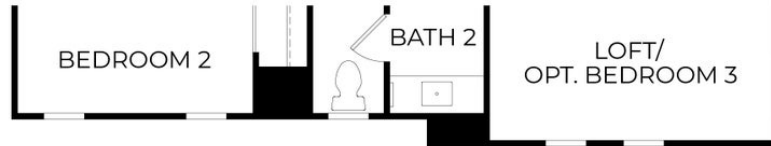
First Floor



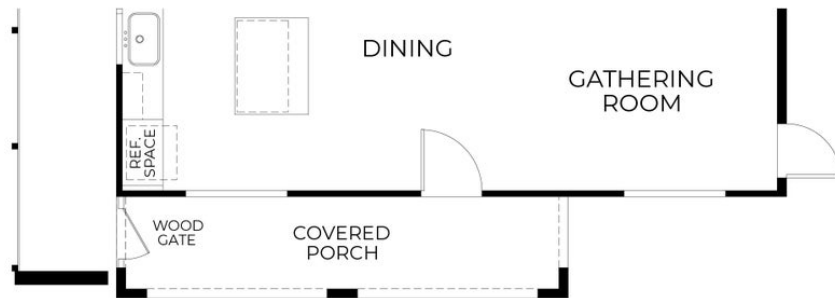
SECOND FLOOR

Preliminary

Second Floor



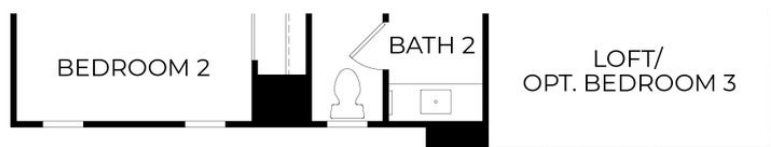
ELEVATION B
SECOND FLOOR
(SAME AS ELEVATION A)



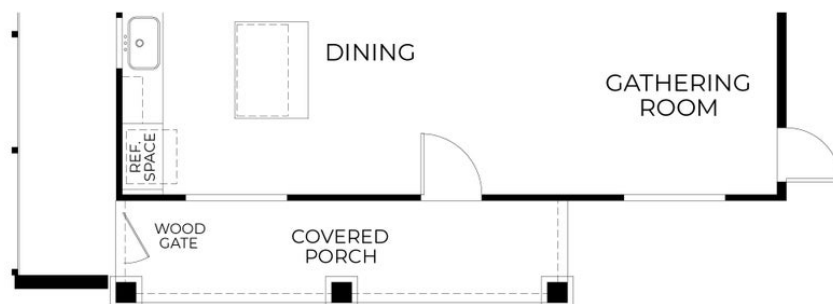
ELEVATION B
FIRST FLOOR

Preliminary

Elevation B



ELEVATION C
SECOND FLOOR
(SAME AS ELEVATION A)



ELEVATION C
FIRST FLOOR

ELEVATIONS

Preliminary

Elevation C



OPTIONAL
BEDROOM 3 ILO LOFT

OPTIONS

Preliminary

Opt. Bedroom 3 ILO Loft