



STARTING AT
\$451,000

1,435 Sq. Ft.

1 Story

2 Bed

2 Bath

2 Car Garage

Gorgeous single-level home in Rio Vista's newest 55+ Active Adult Community! 1,435 Sq. Ft. (approx.) of living space, 2 bedrooms, 2 baths, and a 2-car garage! This floor plan has plenty of room to entertain friends and family with a spacious kitchen island overlooking the dining area, an expansive Great Room, and an optional covered patio to entertain and dine al fresco. This home also includes a large owner's suite with an adjoining private bath, a walk-in closet, and so much more!

Please see agent for more details.



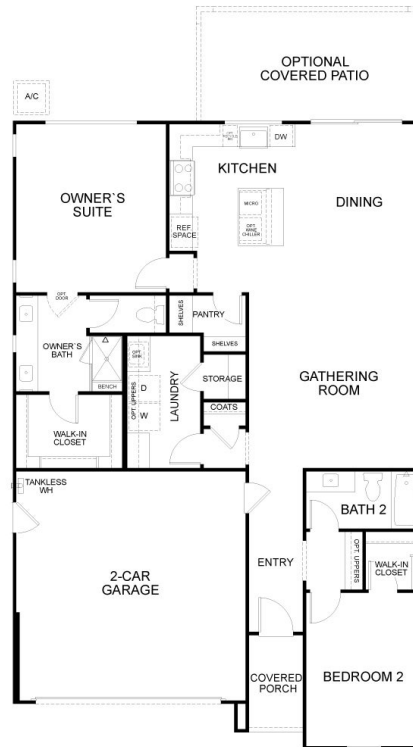
**Residence 2 | Spanish
Bungalow**



**Residence 2 | Bay Area
Bungalow**



**Residence 2 | Craftsman
Bungalow**



Floor Plan